

Circuito de Catalunya
Winter Series Barcelona
Free practice - 4

Results

17/02/2017

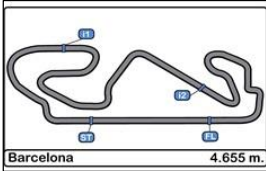
Ord.	Nº Entrant	Nat.	Driver	Nat.	Cat.	Cla.	Chassis	Team	Laps	Best	Time	Gap	Interval	Km/h
1	24	GBR	Ameya Vaidyanathan	IND			Dallara F312	Carlin Motorsport	20	19	1'39.074			169.146
2	16	ESP	Nikita Troitckii	RUS	R	1º	Dallara F312	Drivex School	15	13	1'39.175	0"101	0"101	168.974
3	42	ESP	Eliseo Martínez Meroño	ESP	R	2º	Dallara F312	Teo Martin Motorsport	18	16	1'39.449	0"375	0"274	168.508
4	18	GBR	Jannes Fittje	DEU	R	3º	Dallara F312	Fortec Motorsport	16	14	1'39.502	0"428	0"053	168.419
5	17	GBR	Devlin De Francesco	CAN	R	4º	Dallara F312	Carlin Motorsport	20	17	1'39.633	0"559	0"131	168.197
6	19	GBR	Alfonso Celis, jr	MEX			Dallara F312	Fortec Motorsport	13	9	1'39.841	0"767	0"208	167.847
7	4	ESP	Matheus Lorio	BRA			Dallara F312	Campos Racing	18	17	1'39.885	0"811	0"044	167.773
8	43	ESP	Pedro Cardoso	BRA			Dallara F312	Teo Martin Motorsport	18	15	1'39.926	0"852	0"041	167.704
9	12	ESP	Christian Hahn	BRA	R	5º	Dallara F312	Drivex School	16	9	1'40.296	1"222	0"370	167.085
10	22	ITA	Daniel Pronenko	RUS			Dallara F312	BVM Racing	18	15	1'40.536	1"462	0"240	166.687
11	3	ESP	Thiago Vivalqua	BRA			Dallara F312	Campos Racing	15	10	1'40.565	1"491	0"029	166.638
12	2	ESP	Marta Garcia	ESP	R	6º	Dallara F312	Campos Racing	20	17	1'40.907	1"833	0"342	166.074

Published at:.....

Track Status **DRY**

Stewards:	Race Director:	Timekeeper: 
-----------	----------------	--





Circuito de Catalunya
Winter Series Barcelona
Free practice - 4

LAP ANALYSIS

17/02/2017

Number	2			3			4			12			16		
Lap	Lap Time	Partial	Speed	Lap Time	Partial	Speed	Lap Time	Partial	Speed	Lap Time	Partial	Speed	Lap Time	Partial	Speed
1 ^a - 1	1'03.309	1'03.309	171.157	0'30.168	0'30.168	228.330	0'32.229	0'32.229	212.181	0'30.642	0'30.642	225.000	0'30.304	0'30.304	228.330
1 ^a - 2	1'44.460	0'41.151		1'08.324	0'38.156		1'11.597	0'39.368		1'10.337	0'39.695		1'08.707	0'38.403	
1 ^a - 3	2'28.523	0'44.063	PIT	1'41.523	0'33.199		1'44.881	0'33.284		1'44.602	0'34.265		1'41.707	0'33.000	
2 ^a - 1	1'04.573	1'04.573	167.702	0'29.908	0'29.908	230.278	0'29.997	0'29.997	227.849	0'30.322	0'30.322	226.416	0'29.698	0'29.698	229.788
2 ^a - 2	1'44.602	0'40.029		1'07.898	0'37.990		1'08.391	0'38.394		1'08.971	0'38.649		1'07.580	0'37.882	
2 ^a - 3	2'19.140	0'34.538		1'41.009	0'33.111		1'41.557	0'33.166		1'42.603	0'33.632		1'40.288	0'32.708	
3 ^a - 1	0'30.378	0'30.378	230.278	0'29.862	0'29.862	231.264	0'29.786	0'29.786	229.300	0'29.944	0'29.944	229.300	0'29.666	0'29.666	230.278
3 ^a - 2	1'09.650	0'39.272		1'07.933	0'38.071		1'07.876	0'38.090		1'08.412	0'38.468		1'07.446	0'37.780	
3 ^a - 3	1'43.660	0'34.010		1'40.963	0'33.030		1'40.935	0'33.059		1'41.900	0'33.488		1'40.275	0'32.829	
4 ^a - 1	0'30.342	0'30.342	230.770	0'29.682	0'29.682	232.759	0'29.811	0'29.811	230.770	0'29.903	0'29.903	229.788	0'29.592	0'29.592	230.770
4 ^a - 2	1'09.901	0'39.559		1'07.596	0'37.914		1'07.821	0'38.010		1'08.156	0'38.253		1'07.318	0'37.726	
4 ^a - 3	1'55.283	0'45.382	PIT	1'40.762	0'33.166		1'41.358	0'33.537		1'41.717	0'33.561		1'40.055	0'32.737	
5 ^a - 1	3'50.511	3'50.511	143.047	0'29.690	0'29.690	232.259	0'30.045	0'30.045	237.363	0'29.884	0'29.884	229.788	0'29.554	0'29.554	230.278
5 ^a - 2	4'33.993	0'43.482		1'08.205	0'38.515		1'08.689	0'38.644		1'08.313	0'38.429		1'07.258	0'37.704	
5 ^a - 3	5'08.450	0'34.457		1'49.625	0'41.420	PIT	1'47.745	0'39.056	PIT	1'52.582	0'44.269	PIT	1'52.423	0'45.165	PIT
6 ^a - 1	0'32.053	0'32.053	211.765	6'09.027	6'09.027	177.340	8'04.913	8'04.913	135.169	12'30.346	12'30.346	152.543	12'39.508	12'39.508	124.856
6 ^a - 2	1'11.258	0'39.205		6'47.416	0'38.389		8'44.076	0'39.163		13'12.356	0'42.010		13'26.287	0'46.779	
6 ^a - 3	1'45.068	0'33.810		7'20.724	0'33.308		9'17.737	0'33.661		13'48.138	0'35.782		14'01.826	0'35.539	
7 ^a - 1	0'30.097	0'30.097	230.278	0'29.698	0'29.698	229.788	0'29.779	0'29.779	229.300	0'30.315	0'30.315	225.942	0'32.322	0'32.322	214.286
7 ^a - 2	1'08.887	0'38.790		1'07.569	0'37.871		1'07.644	0'37.865		1'09.285	0'38.970		1'12.342	0'40.020	
7 ^a - 3	1'42.392	0'33.505		1'40.581	0'33.012		1'40.793	0'33.149		1'42.771	0'33.486		1'45.311	0'32.969	
8 ^a - 1	0'29.911	0'29.911	230.770	0'29.617	0'29.617	233.262	0'30.615	0'30.615	232.259	0'29.711	0'29.711	227.369	0'29.543	0'29.543	230.770
8 ^a - 2	1'08.455	0'38.544		1'07.584	0'37.967		1'12.613	0'41.998		1'07.454	0'37.743		1'07.019	0'37.476	
8 ^a - 3	1'42.105	0'33.650		1'40.596	0'33.012		1'45.971	0'33.358		1'40.296	0'32.842		1'39.547	0'32.528	
9 ^a - 1	0'30.280	0'30.280	231.760	0'29.759	0'29.759	232.259	0'32.297	0'32.297	232.259	0'30.895	0'30.895	228.330	0'29.773	0'29.773	230.278
9 ^a - 2	1'10.806	0'40.526		1'07.611	0'37.852		1'12.079	0'39.782		1'10.048	0'39.153		1'07.353	0'37.580	
9 ^a - 3	1'45.178	0'34.372		1'40.565	0'32.954		1'50.448	0'38.369	PIT	1'43.573	0'33.525		1'39.858	0'32.505	
10 ^a - 1	0'29.947	0'29.947	230.770	0'30.104	0'30.104	232.259	8'54.034	8'54.034	138.997	0'29.650	0'29.650	228.814	0'29.687	0'29.687	231.264
10 ^a - 2	1'08.659	0'38.712		1'08.319	0'38.215		9'36.523	0'42.489		1'07.520	0'37.870		1'13.904	0'44.217	
10 ^a - 3	1'42.265	0'33.606		1'49.388	0'41.069	PIT	10'11.840	0'35.317		1'40.652	0'33.132		1'56.002	0'42.098	
11 ^a - 1	0'29.937	0'29.937	231.264	4'53.242	4'53.242	176.760	0'32.511	0'32.511	206.107	0'29.766	0'29.766	229.300	0'29.450	0'29.450	231.264
11 ^a - 2	1'08.856	0'38.919		5'35.402	0'42.160		1'13.221	0'40.710		1'07.531	0'37.765		1'06.793	0'37.343	
11 ^a - 3	1'52.809	0'43.953	PIT	6'08.858	0'33.456		1'46.853	0'33.632		1'40.492	0'32.961		1'39.218	0'32.425	
12 ^a - 1	8'13.980	8'13.980	147.139	0'29.739	0'29.739	231.264	0'29.845	0'29.845	229.300	0'31.595	0'31.595	229.788	0'29.322	0'29.322	232.259
12 ^a - 2	8'57.895	0'43.915		1'07.794	0'38.055		1'07.552	0'37.707		1'13.750	0'42.155		1'06.697	0'37.375	
12 ^a - 3	9'32.869	0'34.974		1'40.848	0'33.054		1'40.409	0'32.857		1'47.906	0'34.156		1'39.175	0'32.478	
13 ^a - 1	0'33.625	0'33.625	195.653	0'29.787	0'29.787	232.759	0'29.584	0'29.584	230.770	0'29.750	0'29.750	229.788	0'29.305	0'29.305	232.759
13 ^a - 2	1'14.039	0'40.414		1'07.768	0'37.981		1'07.350	0'37.766		1'07.490	0'37.740		1'06.636	0'37.331	
13 ^a - 3	1'47.705	0'33.666		1'40.755	0'32.987		1'40.015	0'32.665		1'42.485	0'34.995		1'39.199	0'32.563	
14 ^a - 1	0'31.015	0'31.015	230.770	0'29.812	0'29.812	234.783	0'29.607	0'29.607	231.264	0'29.844	0'29.844	229.300	0'29.553	0'29.553	232.258
14 ^a - 2	1'09.688	0'38.673		1'07.807	0'37.995		1'11.012	0'41.405		1'07.643	0'37.799		1'07.195	0'37.642	
14 ^a - 3	1'43.412	0'33.724		1'49.854	0'42.047	PIT	1'44.435	0'33.423		1'40.726	0'33.083		1'46.623	0'39.428	PIT
15 ^a - 1	0'29.704	0'29.704	231.760				0'29.647	0'29.647	231.760	0'31.619	0'31.619	229.788			
15 ^a - 2	1'07.919	0'38.215					1'07.369	0'37.722		1'10.801	0'39.182				
15 ^a - 3	1'41.024	0'33.105					1'40.183	0'32.814		1'55.625	0'44.824	PIT			
16 ^a - 1	0'29.606	0'29.606	230.770				0'29.592	0'29.592	230.770						
16 ^a - 2	1'07.543	0'37.937					1'07.207	0'37.615							
16 ^a - 3	1'40.907	0'33.364					1'39.885	0'32.678							
17 ^a - 1	0'29.768	0'29.768	230.770				0'31.299	0'31.299	231.760						
17 ^a - 2	1'17.806	0'48.038					1'10.597	0'39.298							
17 ^a - 3	1'53.598	0'35.792					1'48.547	0'37.950	PIT						
18 ^a - 1	0'29.890	0'29.890	231.264												
18 ^a - 2	1'08.403	0'38.513													
18 ^a - 3	1'41.570	0'33.167													
19 ^a - 1	0'29.720	0'29.720	231.760												
19 ^a - 2	1'10.706	0'40.986													
19 ^a - 3	1'57.337	0'46.631	PIT												

Ideal Lap	
0'29.606	0'29.606
1'07.543	0'37.937
1'40.648	0'33.105

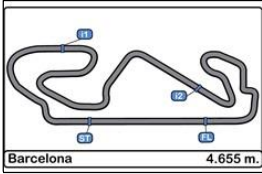
Ideal Lap	
0'29.617	0'29.617
1'07.469	0'37.852
1'40.423	0'32.954

Ideal Lap	
0'29.584	0'29.584
1'07.199	0'37.615
1'39.864	0'32.665

Ideal Lap	
0'29.650	0'29.650
1'07.390	0'37.740
1'40.232	0'32.842

Ideal Lap	
0'29.305	0'29.305
1'06.636	0'37.331
1'39.061	0'32.425

Ideal Best Lap	
0'29.272	0'29.272
1'06.450	0'37.178
1'38.863	0'32.413



Circuito de Catalunya
Winter Series Barcelona
Free practice - 4

LAP ANALYSIS

17/02/2017

Number	17			18			19			22			24		
Lap	Lap Time	Partial	Speed	Lap Time	Partial	Speed	Lap Time	Partial	Speed	Lap Time	Partial	Speed	Lap Time	Partial	Speed
1 ^a - 1	0'31.359	0'31.359	204.934	0'30.188	0'30.188	225.942	0'30.102	0'30.102	227.849	0'30.337	0'30.337	227.849	0'32.275	0'32.275	194.595
1 ^a - 2	1'10.258	0'38.899		1'08.574	0'38.386		1'08.514	0'38.412		1'09.083	0'38.746		1'10.777	0'38.502	
1 ^a - 3	1'43.913	0'33.655		1'41.644	0'33.070		1'41.834	0'33.320		1'42.463	0'33.380		1'44.976	0'34.199	
2 ^a - 1	0'30.110	0'30.110	231.264	0'29.653	0'29.653	228.814	0'29.637	0'29.637	231.264	0'29.937	0'29.937	229.300	0'29.875	0'29.875	232.759
2 ^a - 2	1'08.238	0'38.128		1'07.601	0'37.948		1'07.692	0'38.055		1'08.491	0'38.554		1'08.079	0'38.204	
2 ^a - 3	1'41.829	0'33.591		1'40.522	0'32.921		1'40.748	0'33.056		1'41.931	0'33.440		1'41.082	0'33.003	
3 ^a - 1	0'29.647	0'29.647	232.259	0'29.423	0'29.423	233.262	0'29.562	0'29.562	233.262	0'29.841	0'29.841	230.770	0'30.670	0'30.670	232.258
3 ^a - 2	1'08.254	0'38.607		1'07.362	0'37.939		1'08.032	0'38.470		1'08.457	0'38.616		1'09.651	0'38.981	
3 ^a - 3	1'41.620	0'33.366		1'40.139	0'32.777		1'44.524	0'36.492		1'41.778	0'33.321		1'42.891	0'33.240	
4 ^a - 1	0'29.616	0'29.616	233.262	0'29.286	0'29.286	234.274	0'29.547	0'29.547	233.767	0'29.827	0'29.827	230.770	0'29.591	0'29.591	231.760
4 ^a - 2	1'07.663	0'38.047		1'07.133	0'37.847		1'07.576	0'38.029		1'08.435	0'38.608		1'07.335	0'37.744	
4 ^a - 3	1'41.003	0'33.340		1'40.075	0'32.942		1'40.651	0'33.075		2'09.493	1'01.058	PIT	1'40.171	0'32.836	
5 ^a - 1	0'29.554	0'29.554	233.262	0'29.283	0'29.283	233.767	0'29.554	0'29.554	234.274	5'15.482	5'15.482	175.610	0'29.571	0'29.571	233.767
5 ^a - 2	1'07.641	0'38.087		1'07.095	0'37.812		1'10.180	0'40.626		5'54.172	0'38.690		1'07.630	0'38.059	
5 ^a - 3	1'41.082	0'33.441		1'39.903	0'32.808		1'58.255	0'48.075	PIT	6'27.635	0'33.463		1'40.534	0'32.904	
6 ^a - 1	0'29.914	0'29.914	232.759	0'32.566	0'32.566	234.783	7'19.731	7'19.731	163.885	0'29.887	0'29.887	230.278	0'29.478	0'29.478	234.783
6 ^a - 2	1'08.432	0'38.518		1'18.599	0'46.033		8'02.940	0'43.209		1'08.870	0'38.983		1'07.235	0'37.757	
6 ^a - 3	1'50.658	0'42.226	PIT	1'54.180	0'35.581		8'39.645	0'36.705		1'42.474	0'33.604		1'39.932	0'32.697	
7 ^a - 1	6'38.929	6'38.929	143.809	0'29.546	0'29.546	230.770	0'30.440	0'30.440	226.891	0'29.853	0'29.853	230.770	0'29.471	0'29.471	233.767
7 ^a - 2	7'20.502	0'41.573		1'07.379	0'37.833		1'08.557	0'38.117		1'08.486	0'38.633		1'07.209	0'37.738	
7 ^a - 3	7'54.899	0'34.397		1'40.308	0'32.929		1'43.041	0'34.484		1'41.943	0'33.457		1'39.839	0'32.630	
8 ^a - 1	0'30.884	0'30.884	210.938	0'30.015	0'30.015	231.760	0'29.525	0'29.525	230.770	0'30.085	0'30.085	230.278	0'29.799	0'29.799	234.783
8 ^a - 2	1'09.121	0'38.237		1'09.258	0'39.243		1'07.192	0'37.667		1'12.210	0'42.125		1'07.964	0'38.165	
8 ^a - 3	1'42.563	0'33.442		1'51.271	0'42.013	PIT	1'39.841	0'32.649		1'46.443	0'34.233		1'48.419	0'40.455	PIT
9 ^a - 1	0'29.395	0'29.395	232.759	6'57.419	6'57.419	152.975	0'29.482	0'29.482	233.767	0'29.983	0'29.983	229.788	5'51.974	5'51.974	138.462
9 ^a - 2	1'07.279	0'37.884		7'37.792	0'40.373		1'07.149	0'37.667		1'08.632	0'38.649		6'36.262	0'44.288	
9 ^a - 3	1'40.422	0'33.143		8'13.324	0'35.532		1'40.079	0'32.930		1'42.078	0'33.446		7'10.437	0'34.175	
10 ^a - 1	0'29.363	0'29.363	234.274	0'30.395	0'30.395	225.000	0'29.483	0'29.483	233.262	0'30.548	0'30.548	230.278	0'31.494	0'31.494	206.107
10 ^a - 2	1'06.954	0'37.591		1'09.704	0'39.309		1'07.112	0'37.629		1'12.625	0'42.077		1'09.798	0'38.304	
10 ^a - 3	1'40.008	0'33.054		1'42.748	0'33.044		1'39.948	0'32.836		1'56.454	0'43.829	PIT	1'43.110	0'33.312	
11 ^a - 1	0'29.384	0'29.384	234.274	0'29.401	0'29.401	231.760	0'29.371	0'29.371	234.274	6'15.829	6'15.829	165.899	0'29.420	0'29.420	234.274
11 ^a - 2	1'07.024	0'37.640		1'06.885	0'37.484		1'07.017	0'37.646		6'57.204	0'41.375		1'07.127	0'37.707	
11 ^a - 3	1'40.074	0'33.050		1'39.518	0'32.633		1'39.975	0'32.958		7'31.265	0'34.061		1'40.159	0'33.032	
12 ^a - 1	0'29.424	0'29.424	234.274	0'29.361	0'29.361	232.759	0'31.937	0'31.937	233.262	0'30.027	0'30.027	229.788	0'29.432	0'29.432	233.262
12 ^a - 2	1'07.266	0'37.842		1'07.038	0'37.677		1'11.091	0'39.154		1'08.412	0'38.385		1'06.974	0'37.542	
12 ^a - 3	1'52.947	0'45.681	PIT	1'39.549	0'32.511		1'57.199	0'46.108	PIT	1'41.372	0'32.960		1'39.740	0'32.766	
13 ^a - 1	8'27.054	8'27.054	163.885	0'29.272	0'29.272	233.767				0'29.657	0'29.657	230.278	0'30.324	0'30.324	233.767
13 ^a - 2	9'07.480	0'40.426		1'06.874	0'37.602					1'07.620	0'37.963		1'12.726	0'42.402	
13 ^a - 3	9'41.147	0'33.667		1'39.502	0'32.628					1'40.586	0'32.966		1'58.452	0'45.726	PIT
14 ^a - 1	0'30.172	0'30.172	220.409	0'29.401	0'29.401	231.760				0'29.615	0'29.615	230.770	6'12.124	6'12.124	122.867
14 ^a - 2	1'07.879	0'37.707		1'07.039	0'37.638					1'07.580	0'37.965		6'55.706	0'43.582	
14 ^a - 3	1'40.811	0'32.932		1'39.801	0'32.762					1'40.536	0'32.956		7'29.609	0'33.903	
15 ^a - 1	0'29.318	0'29.318	233.767	0'31.145	0'31.145	232.258				0'29.732	0'29.732	231.264	0'31.587	0'31.587	206.107
15 ^a - 2	1'06.839	0'37.521		1'12.381	0'41.236					1'07.795	0'38.063		1'09.999	0'38.412	
15 ^a - 3	1'39.772	0'32.933		1'53.512	0'41.131	PIT				1'40.922	0'33.127		1'43.071	0'33.072	
16 ^a - 1	0'29.307	0'29.307	233.262							0'29.729	0'29.729	230.770	0'29.654	0'29.654	234.274
16 ^a - 2	1'06.724	0'37.417								1'07.822	0'38.093		1'07.220	0'37.566	
16 ^a - 3	1'39.633	0'32.909								1'40.975	0'33.153		1'39.855	0'32.635	
17 ^a - 1	0'29.299	0'29.299	233.767							0'33.548	0'33.548	229.788	0'29.321	0'29.321	234.783
17 ^a - 2	1'06.783	0'37.484								1'16.409	0'42.861		1'06.749	0'37.428	
17 ^a - 3	1'39.763	0'32.980								2'04.222	0'47.813	PIT	1'39.283	0'32.534	
18 ^a - 1	0'29.408	0'29.408	233.767										0'29.296	0'29.296	234.783
18 ^a - 2	1'06.907	0'37.499											1'06.474	0'37.178	
18 ^a - 3	1'39.955	0'33.048											1'39.074	0'32.600	
19 ^a - 1	0'33.991	0'33.991	217.742										0'29.377	0'29.377	235.295
19 ^a - 2	1'17.721	0'43.730											1'10.314	0'40.937	
19 ^a - 3	2'03.038	0'45.317	PIT										1'43.660	0'33.346	

Ideal Lap	
0'29.299	0'29.299
1'06.716	0'37.417
1'39.625	0'32.909

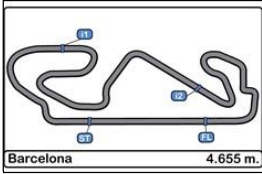
Ideal Lap	
0'29.272	0'29.272
1'06.756	0'37.484
1'39.267	0'32.511

Ideal Lap	
0'29.371	0'29.371
1'07.000	0'37.629
1'39.649	0'32.649

Ideal Lap	
0'29.615	0'29.615
1'07.578	0'37.963
1'40.534	0'32.956

Ideal Lap	
0'29.296	0'29.296
1'06.474	0'37.178
1'39.008	0'32.534

Ideal Best Lap	
0'29.272	0'29.272
1'06.450	0'37.178
1'38.863	0'32.413



Circuito de Catalunya
Winter Series Barcelona
Free practice - 4

LAP ANALYSIS

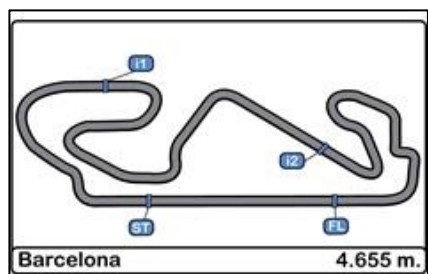
17/02/2017

Number	42			43		
	Lap Time	Partial	Speed	Lap Time	Partial	Speed
1ª - 1	0'31.364	0'31.364	227.369	0'30.285	0'30.285	226.891
1ª - 2	1'10.755	0'39.391		1'09.215	0'38.930	
1ª - 3	1'44.911	0'34.156		1'42.664	0'33.449	
2ª - 1	0'29.923	0'29.923	230.770	0'29.831	0'29.831	230.278
2ª - 2	1'08.237	0'38.314		1'08.119	0'38.288	
2ª - 3	1'41.320	0'33.083		1'41.343	0'33.224	
3ª - 1	0'29.666	0'29.666	232.759	0'29.744	0'29.744	231.264
3ª - 2	1'07.701	0'38.035		1'07.900	0'38.156	
3ª - 3	1'40.477	0'32.776		1'41.168	0'33.268	
4ª - 1	0'29.694	0'29.694	234.274	0'29.807	0'29.807	231.264
4ª - 2	1'07.574	0'37.880		1'07.802	0'37.995	
4ª - 3	1'40.320	0'32.746		1'40.955	0'33.153	
5ª - 1	0'29.565	0'29.565	234.783	0'33.681	0'33.681	204.546
5ª - 2	1'07.475	0'37.910		1'14.617	0'40.936	
5ª - 3	1'40.242	0'32.767		1'48.027	0'33.410	
6ª - 1	0'29.550	0'29.550	235.295	0'29.644	0'29.644	232.259
6ª - 2	1'07.687	0'38.137		1'07.703	0'38.059	
6ª - 3	1'40.939	0'33.252		1'41.066	0'33.363	
7ª - 1	0'31.863	0'31.863	230.278	0'29.615	0'29.615	232.759
7ª - 2	1'11.919	0'40.056		1'07.583	0'37.968	
7ª - 3	1'45.785	0'33.866		1'40.636	0'33.053	
8ª - 1	0'29.768	0'29.768	234.274	0'29.671	0'29.671	232.259
8ª - 2	1'07.755	0'37.987		1'07.725	0'38.054	
8ª - 3	1'42.495	0'34.740		1'40.873	0'33.148	
9ª - 1	0'31.479	0'31.479	228.814	0'29.728	0'29.728	232.258
9ª - 2	1'11.960	0'40.481		1'08.069	0'38.341	
9ª - 3	1'53.084	0'41.124	PIT	1'46.155	0'38.086	PIT
10ª - 1	20'52.162	20'52.162	152.975	20'13.482	20'13.482	157.895
10ª - 2	21'35.473	0'43.311		20'55.702	0'42.220	
10ª - 3	22'10.333	0'34.860		21'29.729	0'34.027	
11ª - 1	0'30.466	0'30.466	231.264	0'31.746	0'31.746	209.709
11ª - 2	1'09.560	0'39.094		1'11.828	0'40.082	
11ª - 3	1'43.626	0'34.066		1'46.037	0'34.209	
12ª - 1	0'29.679	0'29.679	232.759	0'29.438	0'29.438	234.274
12ª - 2	1'07.598	0'37.919		1'07.083	0'37.645	
12ª - 3	1'40.445	0'32.847		1'39.930	0'32.847	
13ª - 1	0'29.478	0'29.478	233.262	0'29.442	0'29.442	235.808
13ª - 2	1'07.169	0'37.691		1'06.976	0'37.534	
13ª - 3	1'39.684	0'32.515		1'39.988	0'33.012	
14ª - 1	0'29.458	0'29.458	233.767	0'29.378	0'29.378	235.295
14ª - 2	1'07.042	0'37.584		1'06.981	0'37.603	
14ª - 3	1'39.572	0'32.530		1'39.926	0'32.945	
15ª - 1	0'29.481	0'29.481	234.274	0'32.449	0'32.449	188.812
15ª - 2	1'07.036	0'37.555		1'11.572	0'39.123	
15ª - 3	1'39.449	0'32.413		1'44.943	0'33.371	
16ª - 1	0'29.471	0'29.471	234.274	0'29.620	0'29.620	232.259
16ª - 2	1'12.256	0'42.785		1'07.549	0'37.929	
16ª - 3	1'47.126	0'34.870		1'40.487	0'32.938	
17ª - 1	0'31.507	0'31.507	233.262	0'29.533	0'29.533	232.759
17ª - 2	1'12.443	0'40.936		1'07.239	0'37.706	
17ª - 3	1'55.626	0'43.183	PIT	1'44.805	0'37.566	PIT
18ª - 1						
18ª - 2						
18ª - 3						
19ª - 1						
19ª - 2						
19ª - 3						

Ideal Lap	
0'29.458	0'29.458
1'07.013	0'37.555
1'39.426	0'32.413

Ideal Lap	
0'29.378	0'29.378
1'06.912	0'37.534
1'39.759	0'32.847

Ideal Best Lap	
0'29.272	0'29.272
1'06.450	0'37.178
1'38.863	0'32.413

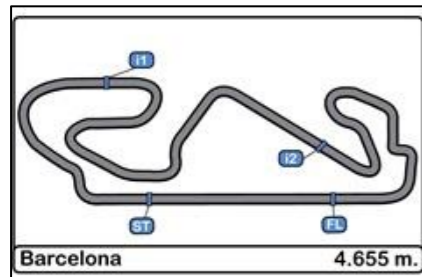


Circuito de Catalunya
Winter Series Barcelona
Free practice - 4

Best Sectors Results

17/02/2017

Sector - 1				Sector - 2				Sector - 3				Ideal Lap vs Best Lap			
Ord.	Nº	Driver	Time	Nº	Driver	Time	Nº	Driver	Time	Ord.	Nº	Driver	Ideal Lap	Best Lap	Ord.
1	18	Jannes Fittje	29.272	24	Ameya Vaidyanathan	37.178	42	Eliseo Martinez Meroño	32.413	1	24	Ameya Vaidyanathan	1'39.008	1'39.074	1
2	24	Ameya Vaidyanathan	29.296	16	Nikita Troitckii	37.331	16	Nikita Troitckii	32.425	2	16	Nikita Troitckii	1'39.061	1'39.175	2
3	17	Devlin De Francesco	29.299	17	Devlin De Francesco	37.417	18	Jannes Fittje	32.511	3	18	Jannes Fittje	1'39.267	1'39.502	4
4	16	Nikita Troitckii	29.305	18	Jannes Fittje	37.484	24	Ameya Vaidyanathan	32.534	4	42	Eliseo Martinez Meroño	1'39.426	1'39.449	3
5	19	Alfonso Celis, jr	29.371	43	Pedro Cardoso	37.534	19	Alfonso Celis, jr	32.649	5	17	Devlin De Francesco	1'39.625	1'39.633	5
6	43	Pedro Cardoso	29.378	42	Eliseo Martinez Meroño	37.555	4	Matheus Lorio	32.665	6	19	Alfonso Celis, jr	1'39.649	1'39.841	6
7	42	Eliseo Martinez Meroño	29.458	4	Matheus Lorio	37.615	12	Christian Hahn	32.842	7	43	Pedro Cardoso	1'39.759	1'39.926	8
8	4	Matheus Lorio	29.584	19	Alfonso Celis, jr	37.629	43	Pedro Cardoso	32.847	8	4	Matheus Lorio	1'39.864	1'39.885	7
9	2	Marta Garcia	29.606	12	Christian Hahn	37.740	17	Devlin De Francesco	32.909	9	12	Christian Hahn	1'40.232	1'40.296	9
10	22	Daniel Pronenko	29.615	3	Thiago Vivalqua	37.852	3	Thiago Vivalqua	32.954	10	3	Thiago Vivalqua	1'40.423	1'40.565	11
11	3	Thiago Vivalqua	29.617	2	Marta Garcia	37.937	22	Daniel Pronenko	32.956	11	22	Daniel Pronenko	1'40.534	1'40.536	10
12	12	Christian Hahn	29.650	22	Daniel Pronenko	37.963	2	Marta Garcia	33.105	12	2	Marta Garcia	1'40.648	1'40.907	12



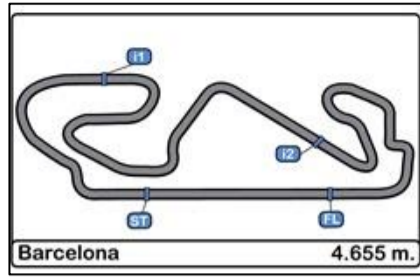
Circuito de Catalunya
Winter Series Barcelona
Free practice - 4

Best Top Speeds

17/02/2017

Ord.	Nº	Entrant	Nat.	Driver	Nat.	Cat.	Cla.	Chassis	Team	Top 1		Top 2		Top 3		Top 4		Top 5		Avg.
										Km/h	Lap	Km/h	Lap	Km/h	Lap	Km/h	Lap	Km/h	Lap	
1	4	Campos Racing	ESP	Matheus Lorio	BRA			Dallara F312		237.363	6	232.258	9	232.258	10	231.760	18	231.760	16	233.080
2	43	RACE	ESP	Pedro Cardoso	BRA			Dallara F312		235.808	14	235.294	15	234.273	13	232.759	8	232.759	18	234.179
3	24	Carlin Motorsport	GBR	Ameya Vaidyanathan	IND			Dallara F312		235.294	20	234.783	7	234.783	9	234.783	18	234.783	19	234.885
4	42	RACE	ESP	Eliseo Martinez Meroño	ESP	R	1º	Dallara F312		235.294	7	234.783	6	234.273	5	234.273	9	234.273	16	234.579
5	3	Campos Racing	ESP	Thiago Vivalqua	BRA			Dallara F312		234.783	15	233.261	9	232.759	14	232.759	5	232.258	6	233.164
6	18	Fortec Motorsport	GBR	Jannes Fittje	DEU	R	2º	Dallara F312		234.783	7	234.273	5	233.766	6	233.766	14	233.261	4	233.970
7	17	Carlin Motorsport	GBR	Devlin De Francesco	CAN	R	3º	Dallara F312		234.273	11	234.273	12	234.273	13	233.766	16	233.766	18	234.070
8	19	Fortec Motorsport	GBR	Alfonso Celis, jr	MEX			Dallara F312		234.273	6	234.273	12	233.766	5	233.766	10	233.261	13	233.868
9	16	Drivex School	ESP	Nikita Troitckii	RUS	R	4º	Dallara F312		232.759	14	232.258	13	232.258	15	231.263	11	231.263	12	231.960
10	2	Campos Racing	ESP	Marta Garcia	ESP	R	5º	Dallara F312		231.760	10	231.760	16	231.760	20	231.263	12	231.263	19	231.561
11	22	BVM Racing	ITA	Daniel Pronenko	RUS			Dallara F312		231.263	16	230.769	4	230.769	5	230.769	8	230.769	15	230.868
12	12	Drivex School	ESP	Christian Hahn	BRA	R	6º	Dallara F312		229.787	14	229.787	5	229.787	6	229.787	13	229.787	16	229.787



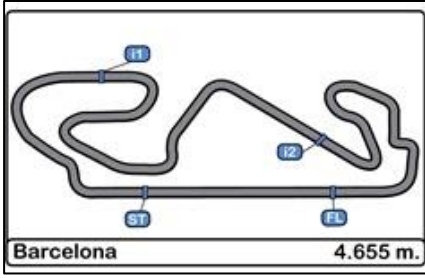


**Circuito de Catalunya
Winter Series Barcelona
Free practice - 4**

Fastest Lap Sequence

17/02/2017

Time of Day	Session Time	Nº	Entrant	Nat.	Driver	Nat.	Cat.	Cl.	Chassis	Time	Km/h	Lap
15:29'42.364	3'38.233	42	RACE	ESP	Eliseo Martinez Meroño	ESP	R	#N/A	Dallara F312	1'44.911	159.735	2
15:30'01.699	3'57.582	43	RACE	ESP	Pedro Cardoso	BRA		#N/A	Dallara F312	1'42.664	163.232	2
15:31'04.810	5'00.613	3	Campos Racing	ESP	Thiago Vivalqua	BRA		#N/A	Dallara F312	1'41.523	165.066	2
15:31'23.693	5'19.553	42	RACE	ESP	Eliseo Martinez Meroño	ESP	R	#N/A	Dallara F312	1'41.320	165.397	3
15:32'13.762	6'09.641	24	Carlin Motorsport	GBR	Ameya Vaidyanathan	IND		#N/A	Dallara F312	1'41.082	165.786	3
15:32'45.740	6'41.622	3	Campos Racing	ESP	Thiago Vivalqua	BRA		#N/A	Dallara F312	1'41.009	165.906	3
15:33'04.273	7'00.030	42	RACE	ESP	Eliseo Martinez Meroño	ESP	R	#N/A	Dallara F312	1'40.477	166.784	4
15:34'44.537	8'40.350	42	RACE	ESP	Eliseo Martinez Meroño	ESP	R	#N/A	Dallara F312	1'40.320	167.045	5
15:35'36.835	9'32.703	24	Carlin Motorsport	GBR	Ameya Vaidyanathan	IND		#N/A	Dallara F312	1'40.171	167.294	5
15:38'57.357	12'53.169	24	Carlin Motorsport	GBR	Ameya Vaidyanathan	IND		#N/A	Dallara F312	1'39.932	167.694	7
15:40'37.284	14'33.008	24	Carlin Motorsport	GBR	Ameya Vaidyanathan	IND		#N/A	Dallara F312	1'39.839	167.850	8
15:54'39.049	28'34.873	24	Carlin Motorsport	GBR	Ameya Vaidyanathan	IND		#N/A	Dallara F312	1'39.740	168.017	13
16:02'23.551	36'19.317	16	Drivex School	ESP	Nikita Troitckii	RUS	R	#N/A	Dallara F312	1'39.547	168.343	9
16:07'38.622	41'34.395	16	Drivex School	ESP	Nikita Troitckii	RUS	R	#N/A	Dallara F312	1'39.218	168.901	12
16:09'17.796	43'13.570	16	Drivex School	ESP	Nikita Troitckii	RUS	R	#N/A	Dallara F312	1'39.175	168.974	13
16:10'48.439	44'44.217	24	Carlin Motorsport	GBR	Ameya Vaidyanathan	IND		#N/A	Dallara F312	1'39.074	169.146	19

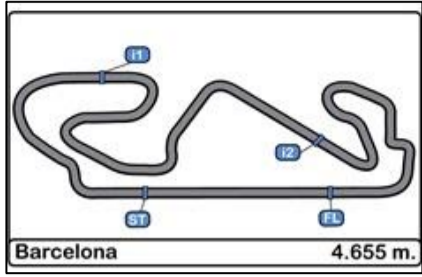


Circuito de Catalunya Winter Series Barcelona

Event Maximum Speed

17/02/2017

Ord.	Nº	Entrant	Nat.	Driver	Nat.	Cat.	Cl.	Chassis	Team	Km/h	Lap	Session
1	3	Campos Racing	ESP	Thiago Vivalqua	BRA			Dallara F312	Campos Racing	238.939	16	Free practice - 1
2	4	Campos Racing	ESP	Matheus Lorio	BRA			Dallara F312	Campos Racing	237.363	6	Free practice - 4
3	2	Campos Racing	ESP	Marta Garcia	ESP	R	1º	Dallara F312	Campos Racing	236.843	19	Free practice - 1
4	16	Drivex School	ESP	Nikita Troitckii	RUS	R	2º	Dallara F312	Drivex School	236.324	7	Free practice - 2
5	1	Campos Racing	ESP	Petru Florescu	ROU	R	3º	Dallara F312	Campos Racing	235.808	19	Free practice - 1
6	19	Fortec Motorsport	GBR	Alfonso Celis, jr	MEX			Dallara F312	Fortec Motorsport	235.808	9	Free practice - 1
7	22	BVM Racing	ITA	Daniel Pronenko	RUS			Dallara F312	BVM Racing	235.808	5	Free practice - 3
8	43	RACE	ESP	Pedro Cardoso	BRA			Dallara F312	Teo Martin Motorsport	235.808	14	Free practice - 4
9	24	Carlin Motorsport	GBR	Ameya Vaidyanathan	IND			Dallara F312	Carlin Motorsport	235.295	20	Free practice - 4
10	42	RACE	ESP	Eliseo Martinez Meroño	ESP	R	4º	Dallara F312	Teo Martin Motorsport	235.295	7	Free practice - 4
11	18	Fortec Motorsport	GBR	Jannes Fittje	DEU	R	5º	Dallara F312	Fortec Motorsport	234.783	7	Free practice - 4
12	17	Carlin Motorsport	GBR	Devlin De Francesco	CAN	R	6º	Dallara F312	Carlin Motorsport	234.274	13	Free practice - 3
13	12	Drivex School	ESP	Christian Hahn	BRA	R	7º	Dallara F312	Drivex School	233.767	16	Free practice - 2

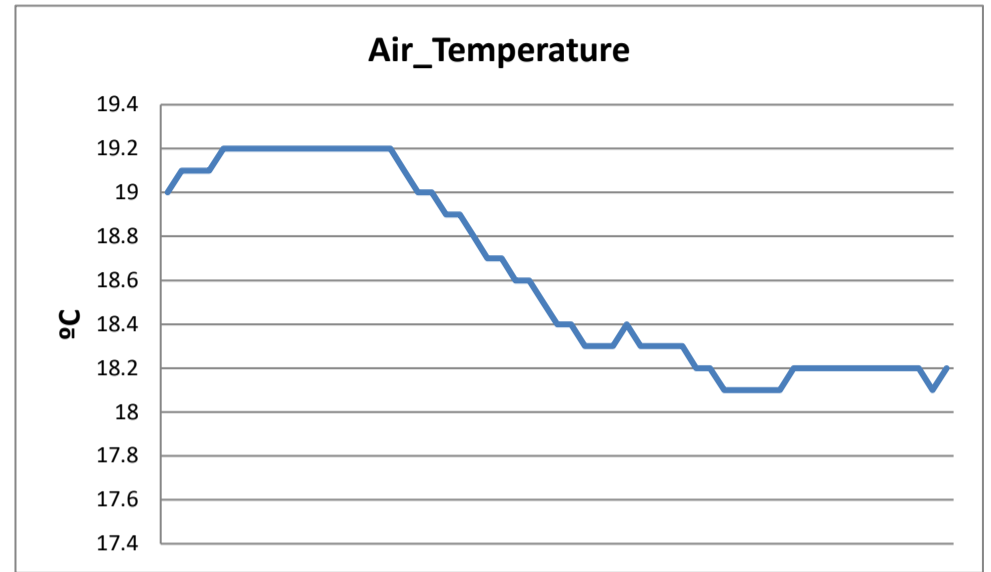
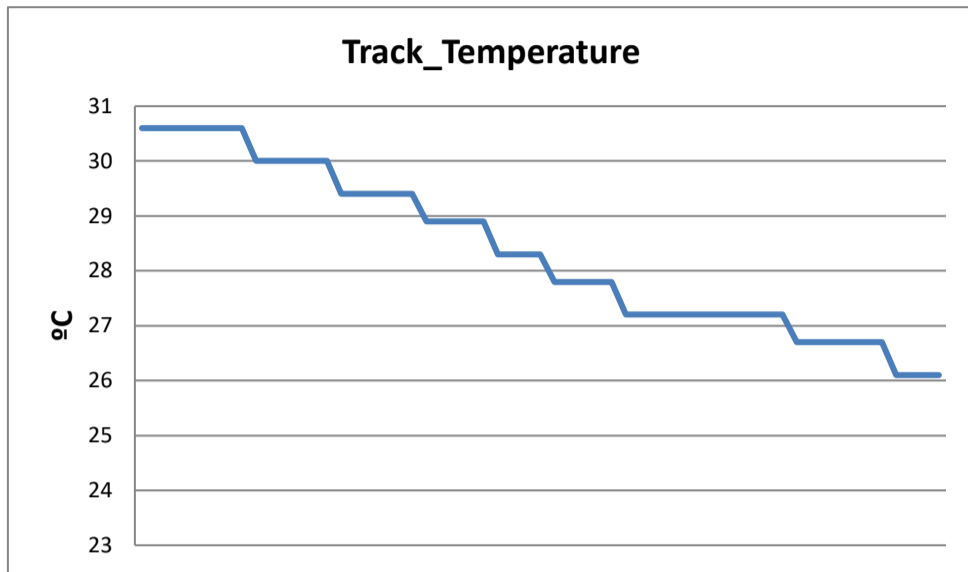


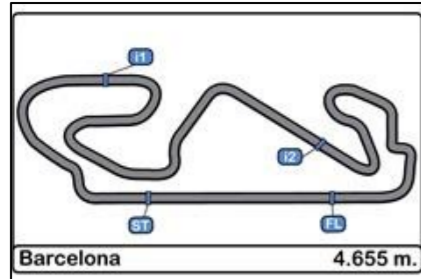
Circuito de Catalunya
Winter Series Barcelona
Free practice - 4

WEATHER REPORT

17/02/2017

Track Status DRY





**Circuito de Catalunya
Winter Series Barcelona**

PRIVATE TESTS RESULTS

17/02/2017

Ord.	Nº	Entrant	Nat.	Driver	Nat.	Cat.	Cla.	Chassis	Team	Laps	Laps1	BL1	Time-1	Laps2	BL2	Time-2	Laps	BL3	Time-3	Laps4	BL4	Time-4	Best	Km/h	
1	24	Carlin Motorsport	GBR	Ameya Vaidyanathan	IND			Dallara F312	Carlin Motorsport	67	14	11	1'41.807	21	11	1'40.943	12	8	1'40.864	20	19	1'39.074	1'39.074	169.146	
2	1	Campos Racing	ESP	Petru Florescu	ROU	R	1º	Dallara F312	Campos Racing	41	19	18	1'39.878	17	15	1'39.170	5	2	1'47.914					1'39.170	168.983
3	16	Drivex School	ESP	Nikita Troitckii	RUS	R	2º	Dallara F312	Drivex School	62	16	14	1'39.502	16	15	1'39.461	15	10	1'40.296	15	13	1'39.175	1'39.175	168.974	
4	3	Campos Racing	ESP	Thiago Vivalqua	BRA			Dallara F312	Campos Racing	72	16	13	1'40.944	24	23	1'39.389	17	15	1'41.053	15	10	1'40.565	1'39.389	168.610	
5	42	RACE	ESP	Eliseo Martinez Meroño	ESP	R	3º	Dallara F312	Teo Martin Motorsport	59				21	19	1'41.188	20	16	1'40.473	18	16	1'39.449	1'39.449	168.508	
6	18	Fortec Motorsport	GBR	Jannes Fittje	DEU	R	4º	Dallara F312	Fortec Motorsport	52				23	20	1'40.052	13	12	1'40.759	16	14	1'39.502	1'39.502	168.419	
7	17	Carlin Motorsport	GBR	Devlin De Francesco	CAN	R	5º	Dallara F312	Carlin Motorsport	68	12	11	1'41.702	23	19	1'39.792	13	10	1'41.322	20	17	1'39.633	1'39.633	168.197	
8	19	Fortec Motorsport	GBR	Alfonso Celis, jr	MEX			Dallara F312	Fortec Motorsport	61	13	9	1'42.269	19	14	1'40.948	16	9	1'40.383	13	9	1'39.841	1'39.841	167.847	
9	4	Campos Racing	ESP	Matheus Lorio	BRA			Dallara F312	Campos Racing	58	17	16	1'40.990	18	16	1'39.964	5	5	1'41.978	18	17	1'39.885	1'39.885	167.773	
10	43	RACE	ESP	Pedro Cardoso	BRA			Dallara F312	Teo Martin Motorsport	70	14	11	1'43.715	22	21	1'40.431	16	12	1'41.118	18	15	1'39.926	1'39.926	167.704	
11	12	Drivex School	ESP	Christian Hahn	BRA	R	6º	Dallara F312	Drivex School	68	18	16	1'42.041	19	18	1'40.693	15	12	1'41.088	16	9	1'40.296	1'40.296	167.085	
12	2	Campos Racing	ESP	Marta Garcia	ESP	R	7º	Dallara F312	Campos Racing	83	19	16	1'41.465	25	21	1'40.372	19	16	1'41.729	20	17	1'40.907	1'40.372	166.959	
13	22	BVM Racing	ITA	Daniel Pronenko	RUS			Dallara F312	BVM Racing	52	6	5	1'43.356	20	16	1'40.671	8	8	1'42.114	18	15	1'40.536	1'40.536	166.687	

Published at:.....

Stewards: 	Race Director: 	Timekeeper: 
--------------------------	-------------------------------	---

